

LUXURY SINGLE STORY HOUSE SERIES

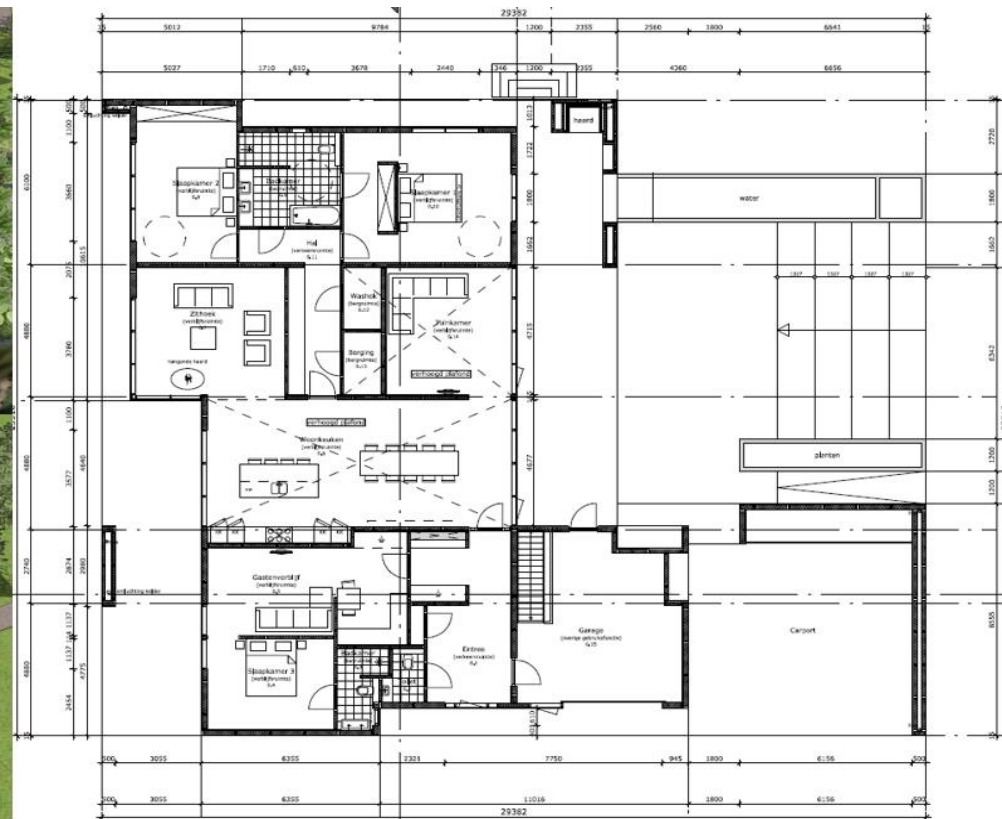


Modern designs from the Netherlands, reasonable layout leads to an elegant & comfortable state of life and provides a harmony life with nature to the owner.

Model I—LSH01

Cost of SIPs structure/shell: USD 119,000

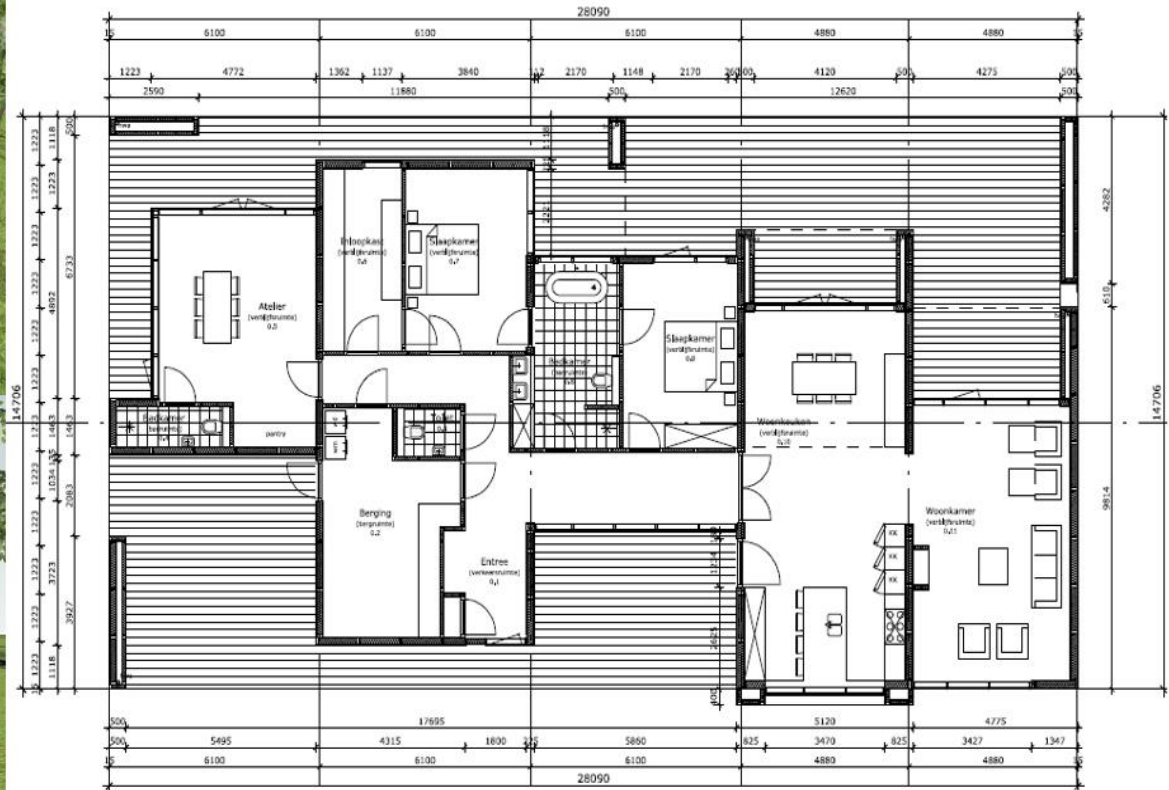
Bedrooms	Bath	Living room	Dining/Kitchen	Office room	Garage	Carport	Porch	Construction size
3	2	1	1	1	1	1	2	525 m ²



Model II—LSH02

Cost of SIPs structure/shell: USD 79,000

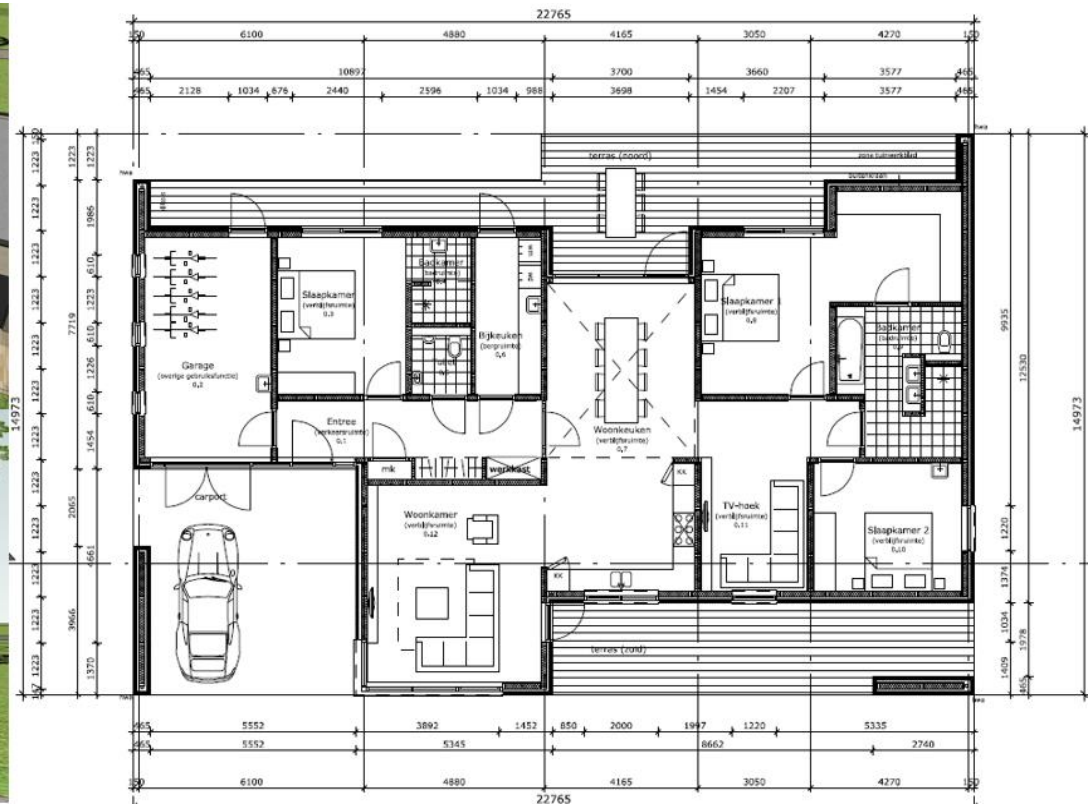
Bedrooms	Bath	Living room	Dining/Kitchen	Office room	Garage	Carport	Porch	Construction size
2	2.5	1	1	1	0	0	2	347m ²



Model III—LSH03

Cost of SIPs structure/shell: USD 75,000

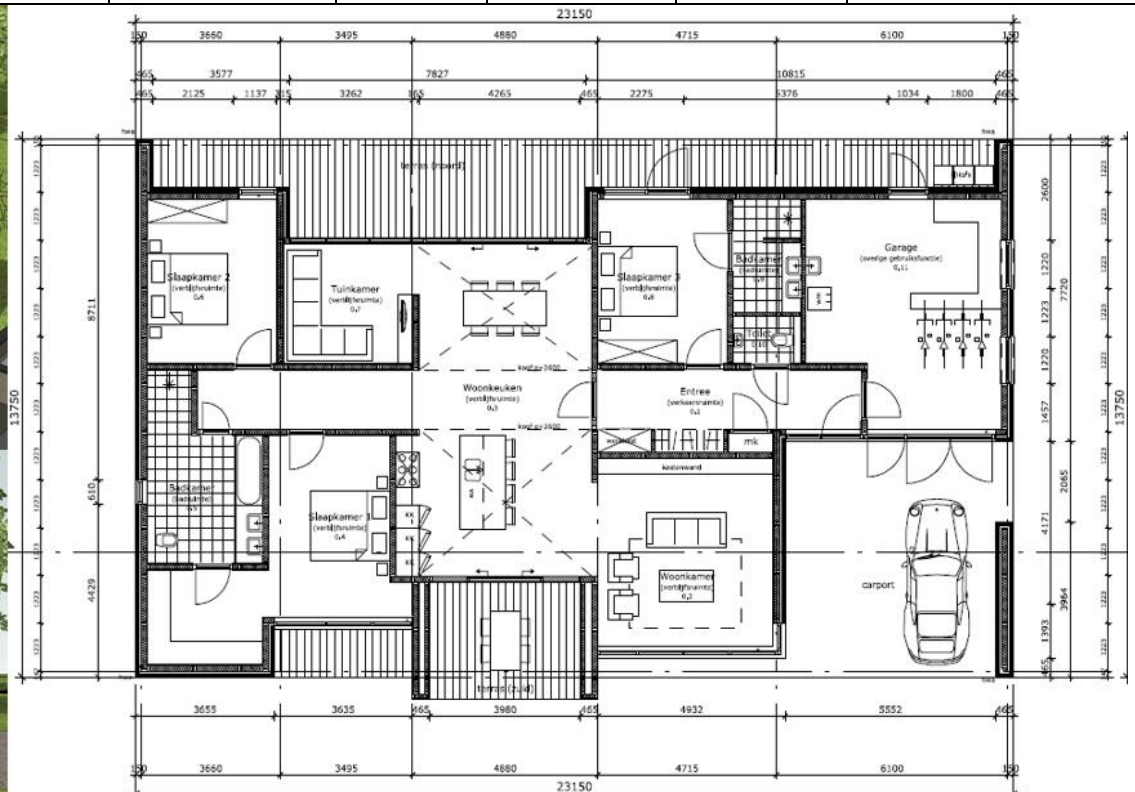
Bedrooms	Bath	Living room	Dining/Kitchen	Office room	Garage	Carport	Porch	Construction size
3	2	1	1	1	1	1	2	327m ²



Model IV—LSH04

Cost of SIPs structure/shell: USD 73,000

Bedrooms	Bath	Living room	Dining/Kitchen	Office room	Garage	Carport	Porch	Construction size
3	2	1	1	1	1	1	2	321m ²



What is structure/shell?

Structure/shell is a house ENVELOPE with all prefab structural components and related accessories which can enable it to be erected. Such as roof, interior/exterior walls, beams/columns, subfloor, nails, glue etc. But excludes finishing materials such as roofing, cladding, flooring and unequipped with windows, doors, kitchen/bathroom facilities, wiring or plumbing.



Can you provide finishing materials?

Besides Structure/shell, we can also help clients to source decoration materials and accessories from the market, such as:

- Waterproof and fireproof materials (breathe paper, SBS, gypsum board, etc)
- Roofing (metal, asphalt, clay, etc)
- Wall cladding (wood, WPC, fiber cement, aluminum, etc)
- Flooring (composite, solid wood, PVC, ceramic tiles, etc),
- Windows/doors (aluminum, PVC, solid wood, etc)
- Kitchen/bathroom facilities (kitchen cabinet, bathtub, toilet, wash basin, etc).

However,

a, we never touch electrical and plumbing items, because the standard of these items are different from country to country.

b, these things are neither made by us not standard in our company, no matter what you want, pls prepare a list with detail

requirements, for example the window, we need to know size, material (aluminum, PVC or wood), double or triple glazed,

Argon filled or vacuum, Low-E treated ? Then we can check with our suppliers for prices and so on.

How do we ship the house to you?

SIPs prefab house is mainly based on panelized system, panels are generally in standard 1220mm width, various thickness and length. We load the precut panels and other components into the container directly.



1x 40'HQ container can load components of a SIPs house in around 100 m².

Case Study:

Model I—LSH01



Project location—Nijverdal, the Netherlands

All components of structure/shell were loaded by 5 x 40'HQ containers

The structure/shell was erected in 18 days by a team of 4 unskilled labors